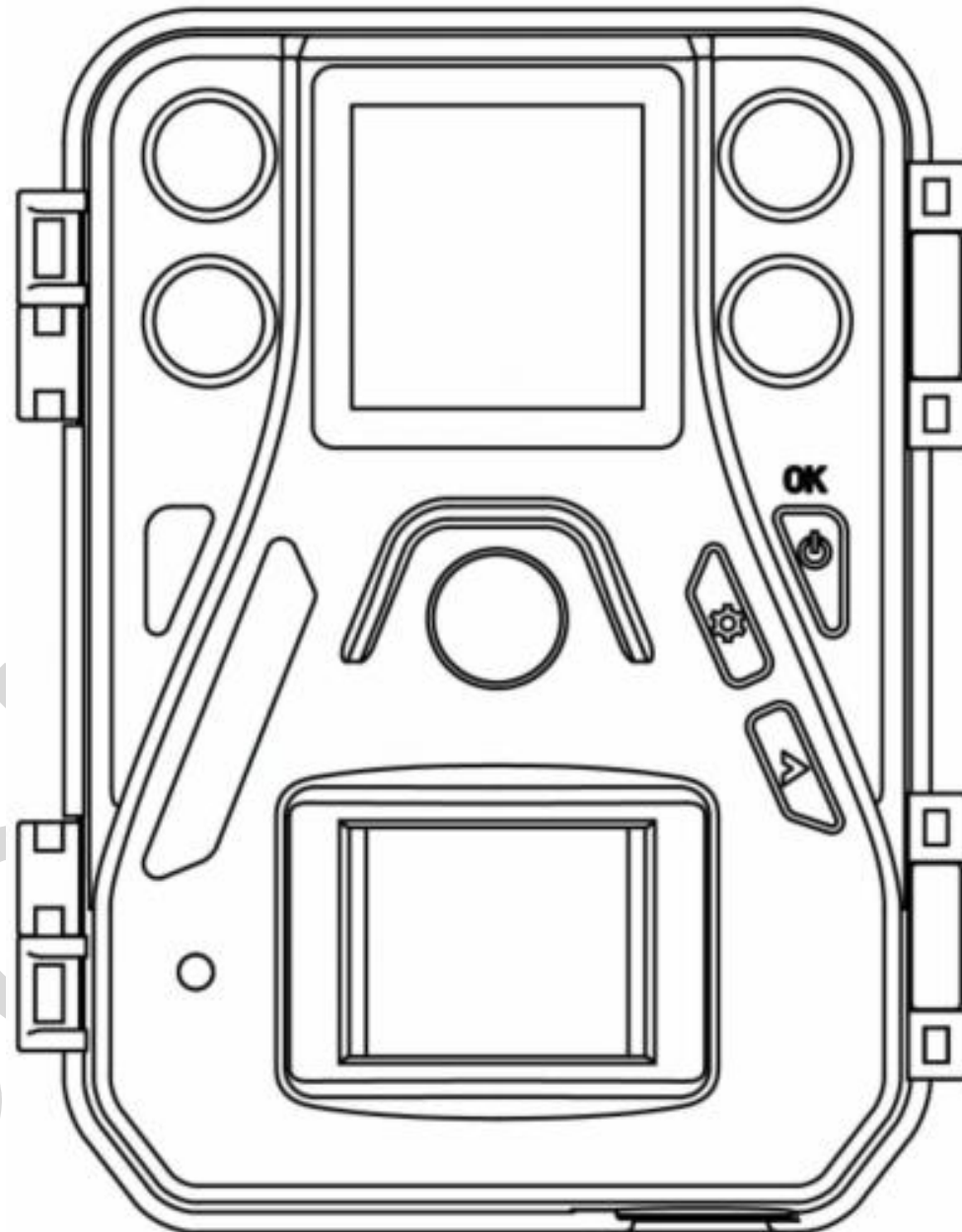


Infrared Digital Scouting Camera *User Manual* **SG520 Series**

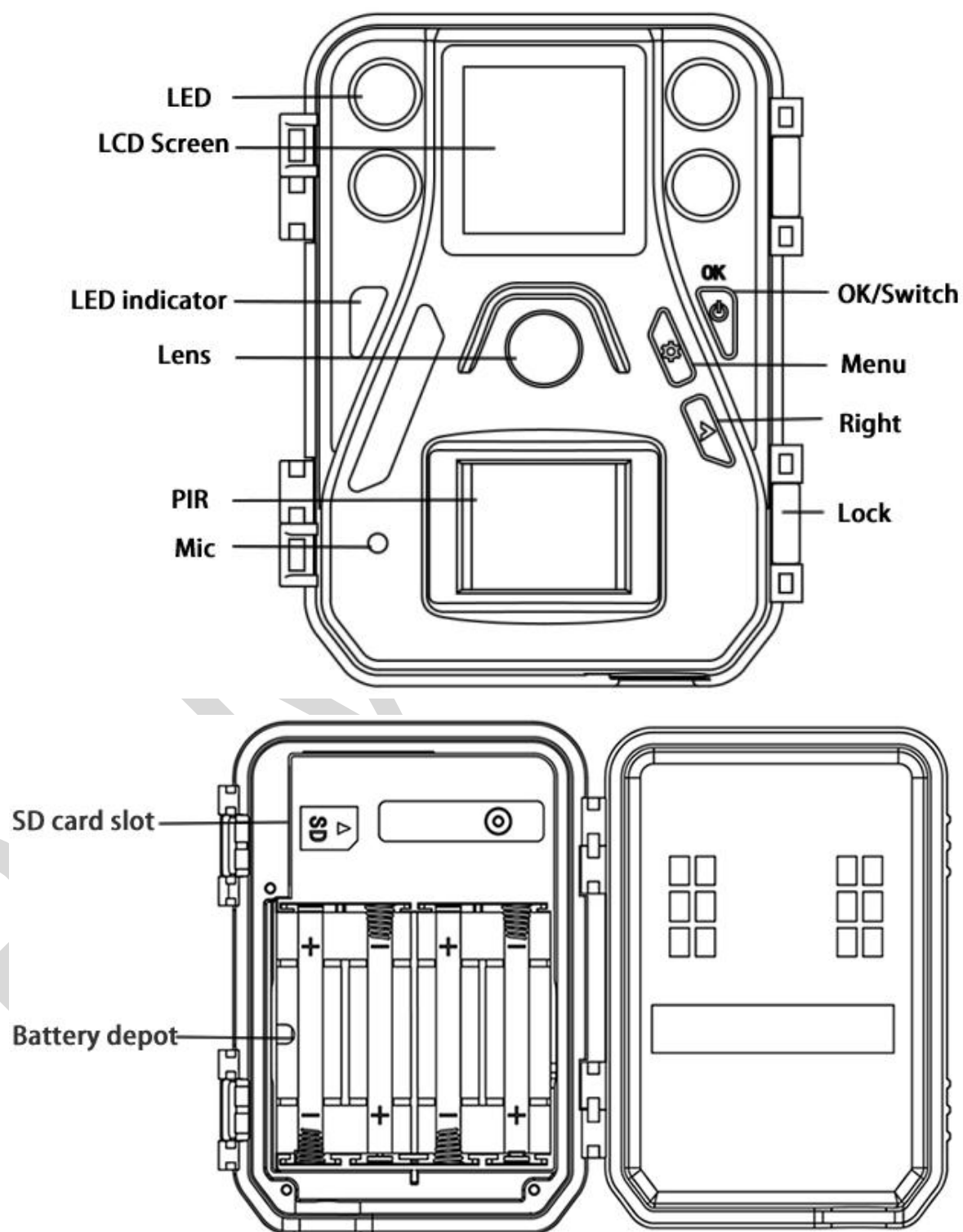


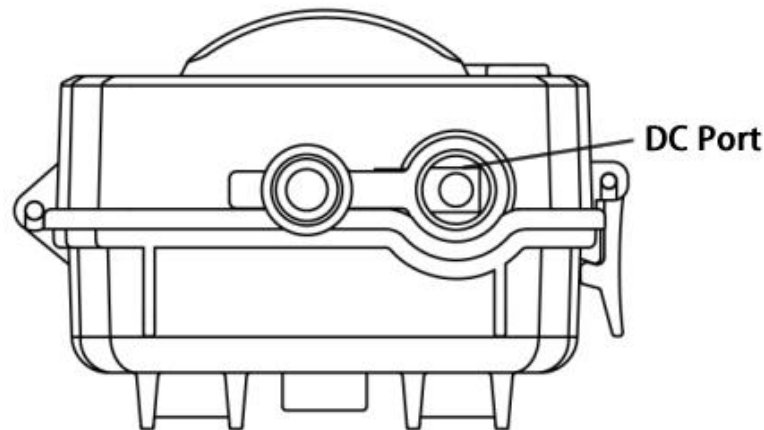
Content

1 Instruction.....	3
1.1 Camera Body Interface.....	3
1.2 General Description.....	4
1.3 Shooting Information Display.....	4
1.4 Saving Images or Videos.....	5
1.5 Cautions.....	5
2 Quick Start Guide.....	7
2.1 Power Supply.....	7
2.2 Insert the SD card.....	7
2.3 The SD card with WIFI.....	7
2.4 Power On.....	9
2.5 Custom Settings.....	9
2.6 Power Off.....	10
3 Item Settings.....	11
3.1 Camera Menu.....	11
3.2 Default Setting.....	13
3.3 Playback Mode.....	14
4 Trouble Shooting.....	15
5 PIR Detection Zone.....	16
6 Technical Specifications.....	17
7 Parts List.....	18

1 Instruction

1.1 Camera Body Interface





1.2 General Description

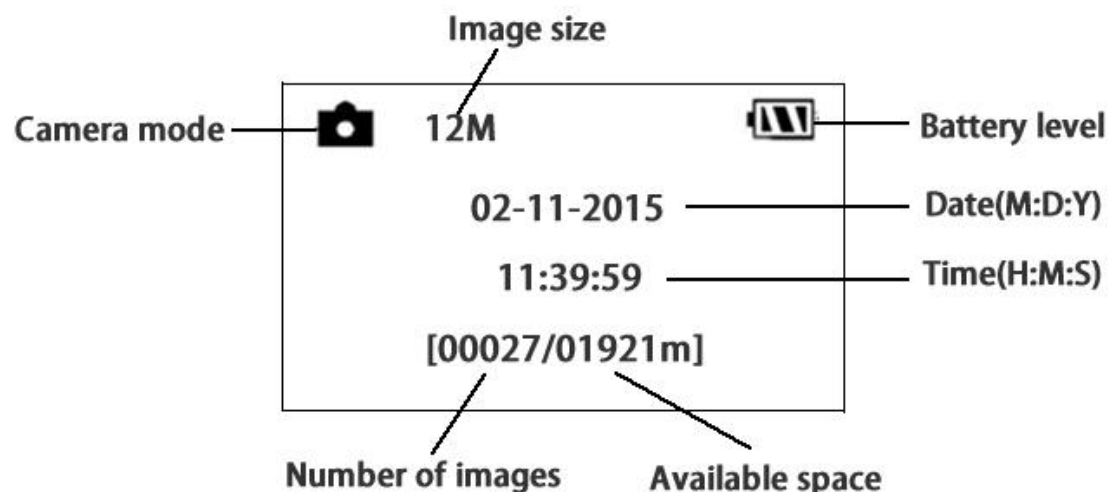
This camera, a digital scouting camera with four 940nm black IR LEDs, is a digital infrared surveillance camera, triggered by any movement of animals or humans monitored by a high sensitive Passive Infrared (PIR) motion sensor, and then automatically captures high quality pictures or records video clips according to default settings or preset customer settings.

It takes color pictures or videos under sufficient daylight and B&W pictures or videos at night.

It is resistant against water and snow. The camera can also be used as a portable digital camera.

1.3 Shooting Information Display

There is a 1.44" LCD display screen with three keys to setup the camera. When the camera is turned on, current settings will be displayed on the screen.



1.4 Saving Images or Videos

The camera uses a standard SD (Secure Digital) memory card to save images (in .jpg format) and videos (in .avi format). SD and SDHC (High Capacity) cards up to 32GB are supported. Before inserting the SD card be sure that the SD card is unlocked.

(Only for SG520-W) This camera support WIFI function, but you need to insert WIFI-SD card. You can preview and download the pictures and videos via WIFI from the WIFI-SD card to your mobile phone.

Note: without SD card inserted, the camera will not work.

1.5 Cautions

- ★ The camera is supplied by 4 AA batteries or DC power adapter with output of 6V. Please install batteries according to shown polarity.
- ★ Please insert the SD card before testing the camera. The camera has no internal memory for saving images or videos. If no SD card is inserted, the camera will shut

down automatically.

- ★ (Only for SG520-W) Please insert the SD card with wireless WIFI, if you want to use the WIFI function.
- ★ Please do not insert or take out the SD card when camera is working.
- ★ It is recommended to format the SD card by camera when used for the first time.
- ★ The camera will enter into hunting mode without operation in 20 second, press “OK” key to wake up the camera.

BOLY MEDIA

2 Quick Start Guide

2.1 Power Supply

Use 4 AA batteries or 6V external power supply to support the camera.

Use high-capacity and high-performance alkaline batteries (recommended), rechargeable Lithium batteries or rechargeable Nimh batteries.

2.2 Insert the SD card


Open the lock, insert SD card into the card slot. Please note that the SD card is on the “write” (not locked) position otherwise the camera will not function correctly. The camera itself has no internal memory for saving images or videos.

2.3 The SD card with WIFI

(Only for SG520-W) This camera can be connected to your mobile phone or PC by WIFI, after you inserting the WIFI-SD card (up to 32GB are supported). Please install the ‘FlashAir’ APP in your device or PC before using the WIFI function. Then you can preview or download the images and videos from the camera via your device or PC.

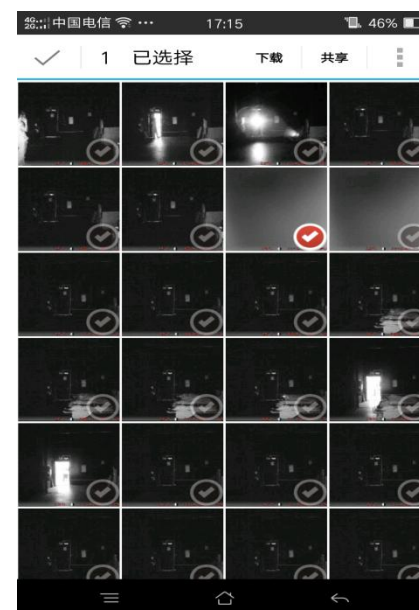
1. For IOS/ Android :

- 1.1 Download the FlashAir App to your smart device from the Apple store (IOS system) or Google Play (Android system);

- 1.2 Install the APP in your device. The icon appeared as , means installing is completed;
- 1.3 Turn on the WIFI button. When the camera is turned on, in any modes, press the “ON” button on the wireless WIFI remote control;



- 1.4 Search the WIFI name on your device, and enter the WIFI password to connect. The default password is 12345678;
- 1.5 Open the APP, all operations can be done through the APP once WIFI is connected successfully to smart device.



In WIFI mode, the indication LED (red) will be steady until turn off WIFI.

2. For Windows PC/Mac PC:

2.1 Fill in the below URL on your browser.

<http://www.toshiba.co.jp/p-media/wwwsite/flashair.htm>

2.2 Click 'Configuration Software Download', and saving APP in your local storage.

2.3 Execute the downloaded file, and install.

2.4 Power On

Before power on, please pay attention to the followings:

1. Avoid temperature and motion disturbances in front of the camera such as big leaf, curtain, air-conditioner, air outlet of the chimney and other heat sources to prevent from false triggering.

2. The height from ground for placing the camera should vary with the object size appropriately. Generally, one to two meters are preferred.

Long press "OK" button to turn on the camera to do settings. The camera will enter into hunting mode without operation in 20 second. The motion indication LED (red) will blink for about 10s. The 10s is a buffering time before autonomic capturing photos or videos, e.g. for locking and mounting the camera and walking away.

2.5 Custom Settings

Press MENU to enter into menu settings. The camera can be adjusted to manually customize the camera settings which displayed on the LCD screen.

You can press RIGHT key to manually capture photos or

record a video and again to stop a video.

Key Notes:

“OK”: turn on the camera, save settings and go to next item, playback image or video in preview mode, wake up the camera in hunting mode.

“MENU”: enter into setup mode, exit.

“RIGHT”: take photo or video in preview mode, next option.

2.6 Power Off

Long press “OK” to power off the camera. Please note that even in off mode, the camera still consumes a small amount of battery power. Therefore, please remove the batteries if the camera is not in use for a length of time.

3 Item Settings

3.1 Camera Menu

To view the camera settings menu, press “MENU” to enter into setup mode. Use “RIGHT” key to select the different options, press “OK” to save and go to next item and “MENU” to exit.

Main Menu	Description
Language	Choose language you need. It supports seven languages: English, Suomi, Deutsch, French, Español, Český, Svenska.
Camera Mode	There are three camera modes: Photo, Video and Pic+Video.
Set Clock	Set camera date and time. You can change the date and time of the device by setting this parameter when necessary, e.g., after every battery change. The date format is month/day/year, the time format is hour: minute: second.
Photo Size	Choose the image size: 5MP, 10MP or 12MP.
Photo Burst	Choose the continuous shooting numbers after each triggering.
Video Size	Choose the video size: 1280x720 or 640x480.

Advanced Menu	Description
Video Length	Choose duration of recording video. It has three values: 10s, 30s and 60s.
Time Lapse	<p>Time lapse means the camera can capture images or videos at a preset time interval regardless of whether motions are detected. The default parameter is Off, which means the timer function is disabled. Changing this parameter to a non-zero value turns on the Time Lapse mode, and camera will take photos at given time interval.</p> <p>Please note that if the PIR Trigger is set to Off, then the Time Lapse can't be set to Off.</p>
PIR Trigger	Choose sensitivity of PIR. The higher, the easier motion sensor would be triggered. It is recommended to use Normal mode. The sensitivity of PIR is strongly related to the temperature. Higher temperature leads to lower sensitivity.
PIR Interval	This parameter means how long the PIR sensor will be inactive after each triggering in hunting mode. During this time the PIR of the device will not react to any motion of human or animals.
Format SD	All images and videos in the SD card

	will be deleted, so make sure that you have made a backup of important data.
Version	Version information.
Default Set	Restore all settings to default values.

3.2 Default Setting

Setting Items	Default	Options	Submenu
Language	English	Suomi Deutsch French Español Česky Svenska	
Camera Mode	Photo	Video Pic+Video	
Set Clock	Enter		Adjust Clock
Photo Size	12MP	5MP 10MP	
Photo Burst	1 Photo	3 Photos	
Video Size	1280x720	640x480	
Video Length	10 Sec	30Sec 60Sec	
Time Lapse	Off	5Min 30Min 2Hour 8Hour	
PIR Trigger	Normal	High Low Off	
PIR Interval	10 Sec	0Sec	

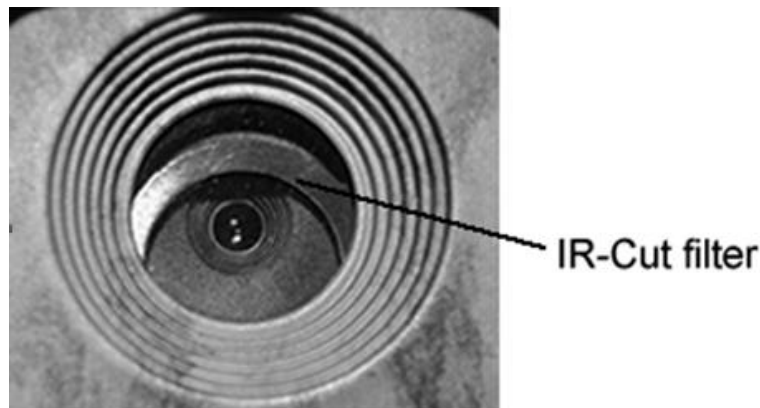
		30 Sec 1Min 5 Min	
Format SD	Enter		Yes No
Version	Enter		
Default Set	Enter		Yes No

3.3 Playback Mode

Press “OK” to enter into playback mode, images can be viewed on the LCD screen of camera, but videos can only be played on your computer. For simplicity, operations with PC won’t be introduced here. “OK” and “RIGHT” keys help to choose the previous or next one.

4 Trouble Shooting

1 There is something in front of the camera lens. Is the camera broken?



A: The camera is not broken. It's an IR-cut filter. When the camera is powered on, the IR-cut will be reset and cover the lens. Only when the camera is powered off, the IR-cut will be at a random place.

2 The camera is not working anymore.

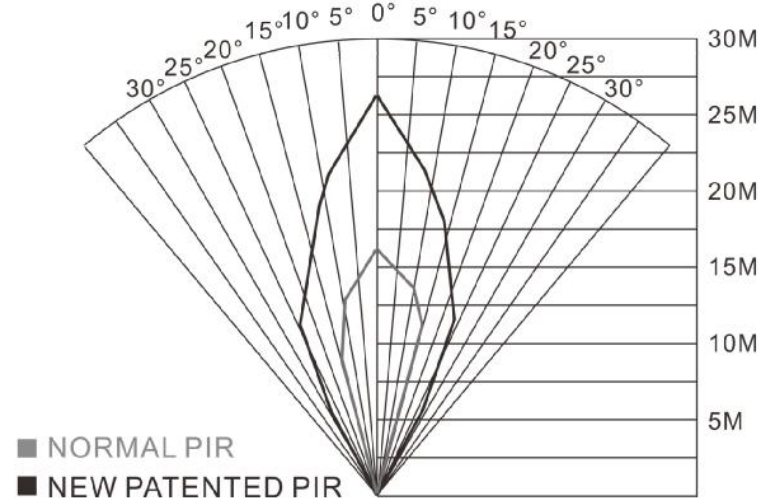
A: Most likely, no SD card has been inserted in the camera when it is turned on. Please make sure a working SD card has been inserted in the camera before it is turned on.

3 The display screen is suddenly black.

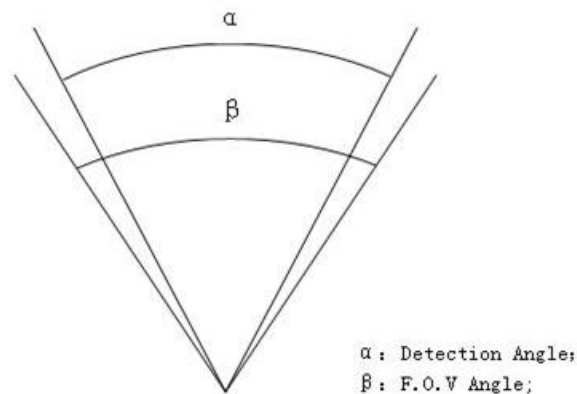
A: The camera has entered into hunting mode. Press "OK" to wake it up if you want to continue to setup the camera.

5 PIR Detection Zone

This camera has a new design of PIR and the new PIR is patented. The new patented PIR's detection range can reach to 85ft in good environments. Following picture shows the compared detection zone between normal PIR and the new patented PIR.



The PIR detection angle (α) is just smaller than the field of view (FOV) angle (β). The advantage of this design is to reduce empty picture rate and capture most, if not all, motions.



6 Technical Specifications

Image Sensor	5MP CMOS Sensor 10MP, 12MP Interpolation
Lens	F/NO=2.2 FOV(Field of View)=55°
PIR detection range	85ft
Display Screen of Remote Control	1.44" LCD
Memory Card	Up to 32 GB
Image Resolution	12MP=4032×3024 10MP = 3648 ×2736 5MP = 2560×1920
Video Resolution	1280x720(20fps) 640×480(20fps)
PIR Sensitivity	Adjustable (High/Normal/Low)
Trigger Time	<1.2s
Weight	180g(without battery)
Operation/Storage Tem.	-20 - +60°C / -30 - +70°C
Power Supply	4×AA
Sound Recording	Available
Mounting	Rope/Belt/Python lock
Dimensions	107 x76 x40 mm
Operation Humidity	5% - 90%
Security Authentication	FCC, CE, RoHS

7 Parts List

Part Name	Quantity
Camera	One
Belt	One
User Manual	One
Warranty Card	One



Version 1.0